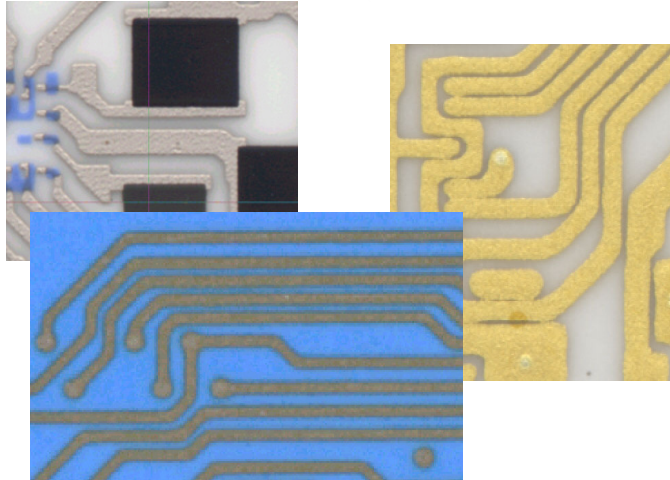


# ScanINSPECT API™

## Automatic Print Inspection



### WHAT IS ScanINSPECT API?

ScanINSPECT provides a simple and user-friendly alternative to inaccurate and time-consuming manual inspection methods or high cost automated machines.

ScanINSPECT uses a simple Windows user interface integrated with an automated conveyor and image-processing unit. This combination allows 100% inspection of printed conductor, resistor, or dielectric materials on LTCC, MLCC, HTCC and other substrates.

### HOW DOES ScanINSPECT API WORK?

ScanINSPECT API's integration within the production process provides 100% verification of print images before moving to the next process.

Each substrate is placed directly from the assembly line into ScanINSPECT API for 100% inspection. The substrate is then accepted or rejected. No more surprises!

### INPUT DATA VERSATILITY

ScanINSPECT API adds flexibility to your inspection process. ScanINSPECT API utilizes golden printed substrates to verify print areas.

### INCREASED YIELD & IMPROVED OVERALL EQUIPMENT EFFICIENCY

ScanINSPECT API's powerful inspection process increases product yield by ensuring accurate printing. Missing or excess material can result in lost production time, extensive rework and product failure.

### SIMPLICITY

ScanINSPECT API set up is quick and easy. Each substrate is automatically aligned and checked for accuracy with a PASS or FAIL inspection in seconds.

### WHY USE ScanINSPECT API?

- **Mandatory:** 100% automatic inspection of substrate after printing.
- **Security:** Confirm print accuracy.
- **Necessity:** Detect errors before product failure.
- **Flexibility:** Inspect a wide variety of materials and substrates.

### System Specifications

- Maximum Board Size: 18" X 20" (457mm X 508mm)\*\*
- Minimum Board Size: 2" x 2" (50mm x 50mm)
- Maximum Inspection Area: 16.5" X 20" (419mm X 508mm)
- Resolution: 400/1000/2000/3200\*/4800\* dpi
- SMEMA Interface
- CE Certified
- \*Reduced Scanning area for 3200 & 4800 dpi.
- \*\* XL size conveyor

### Requirements

- Power Supply: 230V / 50 Hz or 110V / 60 Hz (jumper selectable)

- Power input: 0,75kW

### Footprint

- Length: 41.7" (1060mm)
- Width: 42.9" (1089mm)
- Height: 57" (1450mm) excluding light tower
- Weight: 330lbs. (150kg)

### Computer

- Pentium (3GHz or higher) Personal Computer
- 80 GB HD, 2 GB RAM
- CD-ROM (CD-RW for archive purposes)
- Monitor
- Printer
- Win XP Service Pack 2
- 2 available USB ports

(All specifications and designs subject to change without notice.)



12779 W. Belleview Ave.

Littleton, CO. 80127 USA

T: 303.697.8888 F: 303.697.8580

E: [info@scancad.com](mailto:info@scancad.com) [www.scancad.com](http://www.scancad.com)