

# EMISStream™

## "EMI Suppression Tool"

### WHAT IS EMISStream?

EMISStream is the solution that can suppress undesirable electromagnetic radiation or electromagnetic interference (EMI) generated from printed circuit boards.

### HOW DOES EMISStream WORK?

At the placement design stage (pre-routing), EMISStream examines optimal placement locations for parts by using imaginary routing and verifies the effects of the proposed EMI solution. EMISStream also can suppress resonance which occurs between the power and ground (GND) planes by analyzing the resonance which occurs by changing the locations of capacitors.

By eliminating the causes of unnecessary electromagnetic radiation from the initial design stage, EMISStream substantially reduces the time and costs needed for revision after the prototype is developed and enables rapid time-to-market.

### INCREASE YIELD & IMPROVE OVERALL EQUIPMENT EFFICIENCY

Electromagnetic radiation regulations of many countries have become more rigorous due to the rapid growth of the number of electronic devices in the market. To find low-noise solutions, many development sites employ the build-and-try approach using prototype devices, and these development sites are now faced with new problems of longer time-to-market and higher product development costs.

### FIND THE CAUSES OF EMI CAUSES AT DESIGN STAGE AND DECREASE EMI PROBLEMS AFTER PROTOTYPE.

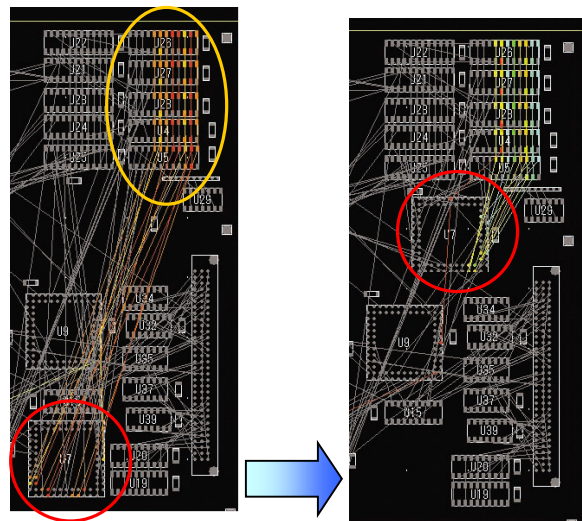
EMISStream uses the design data for printed circuit boards and performs checks on items that cause EMI. There are no unexpected setbacks because these checks are performed automatically and in a short period of time. EMISStream has tapped into the EMI design techniques that have been passed down over the years and carefully selected items that have theoretical support. EMISStream has also included more effective check items based on the latest research results. For the threshold values that are set for individual check items, EMISStream calculated optimal values from theoretical and actual measurement verifications and provided those values as default values. Of course, the threshold values can also be changed individually.

### EMI CHECK FUNCTIONS PERFORMED:

- (1) Trace length
- (2) Number of via-holes
- (3) Traces crossing over GV planes
- (4) Discontinuities of return current path
- (5) Traces near plane edges
- (6) Estimation of radiated electromagnetic field  
Note: Differential mode radiation + common mode radiation
- (7) SG traces
- (8) Distance between grounding vias of SG traces
- (9) Grounding vias along ground-plane edge
- (10) Filters on a trace connected to a connector
- (11) Decoupling capacitor
- (12) Differential Pair Check
- (13) Crosstalk

### PARTS PLACEMENT ANALYSIS

If an error is found in the post-routing check, any remedy for correcting that error, including repositioning parts and changing routing paths, becomes difficult. Since two of the main factors that affect EMI are trace length and placement positions, EMISStream predicts and checks the routing before any actual routing takes place. If errors occur repeatedly in a net that connects parts, generally the number of errors can be reduced by placing those parts closer together. EMISStream supports What-If analysis, which lets you change placement positions and analyze how close together parts should be placed.



Example of the EMI results before any actual routing takes place. In the figure to the left, you can see many errors have occurred, indicated by the nets in red, related to parts inside of the red and yellow circles. If you move the part in the red circle to a location closer to the parts in the yellow circle, you can see the decreased errors that have occurred indicated by the net colors changed to green.

### CORRECTION PRIORITY DISPLAY

After executing the various check items, EMISStream adds numerical values to each net based on the severity of the detected errors, color codes the nets in the order they should be corrected, and lists the nets along with the detected errors. Effective corrections can be made in a shorter period of time by correcting the nets sequentially from those with the highest error score. Depending on the check item, EMISStream also displays explanations of the error causes and advice on how to correct the errors.

### RESONANCE OVERLAP DISPLAY

By showing the results of resonance analysis between the circuit operating frequency and the harmonic frequency components in an overlap display, EMISStream lets you visually check resonance conditions when capacitors are repositioned, added, or deleted. Even if a capacitor for suppressing resonance at a certain frequency is placed at a location having a high resonance voltage amplitude, the overall amount of EMI will not be suppressed if resonance occurs at a different harmonic frequency. This overlap display lets you check whether all resonance, including resonance involving harmonic frequencies, is being suppressed. Consequently, suppression of EMI becomes possible during actual operation of the product.

## POWER-GND RESONANCE ANALYSIS

Equipped with theoretically determined know-how, the Power-GND analysis function analyzes common mode radiation and the power-GND resonance, which causes EMI.

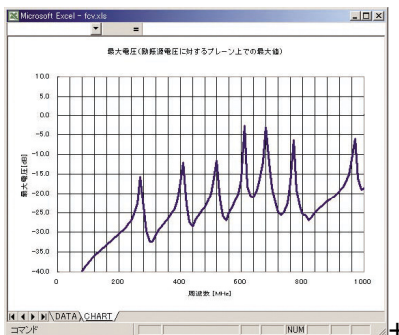
The amount of EMI increases if resonance occurs between the power and ground (GND) planes. The power-GND resonance analysis function creates a simulation model of the plane shapes and the capacitors between the power and GND planes, and uses circuit simulation tools to analyze the resonance. This function displays the size of plane-GND resonance as a gradation map on the printed circuit board. (Locations where the voltage amplitude is large are indicated in red tones; locations where the voltage amplitude is small are indicated in blue tones.) The user can create a design that suppresses resonance between the voltage and GND planes by using a function to automatically place capacitors at locations where the voltage amplitude is large (locations indicated with red tones) and analyzing the resonance again.

## EXCITATION SOURCE MOVEMENT

If the power plane is close to rectangular in shape, the circuit simulation will produce nearly identical resonance results regardless in which of the four plane corners a drive source that becomes a noise source is placed. Therefore if the drive source position is not specified, EMISStream will place the drive source at the bottom left corner of the plane when it executes resonance analysis. If the power plane has a complex shape or if the drive source is placed at an LSI position, you can specify the drive source position manually for the analysis.

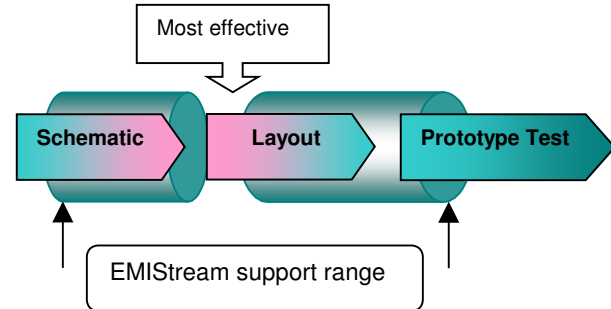
## FREQUENCY CHARACTERISTIC DISPLAY

EMISStream displays a graph that plots the frequency values on the horizontal axis and the maximum voltage values of a plane on the vertical axis. The peak in the graph represent frequencies at which resonance is occurring. If a harmonic component of the circuit's operating frequency is close to a peak frequency, unnecessary electromagnetic radiation due to resonance can occur. This graph lets you see the sharpness of the resonance peaks and the critical frequency bandwidths.



## SUPPORT RANGE

EMI Stream provides support from the schematic stage to the layout design stage to the prototype stage. Not only can the checks be done after routing, but also optimal part placement analysis at the part placement stage can be performed. You can decrease repetitive work and shorten time to market.



## INTERFACES

- EDIF200 (only import)  
ex: OrCAD Capture®, PADS Designer®, etc.
- Signal Integrity Simulation Tool
  - LineSim®(Mentor Graphics)
  - BoardSim® (Mentor Graphics)
- Layout CAD
  - Power PCB®(Mentor Graphics)
  - Design File(Cadence Design Systems)
  - ODBG File (Valor Computerized Systems)
  - CR5000/Board Designer® (Zuken)DSN Interface

## OPERATING ENVIRONMENT

- Pentium (3GHz or higher) Personal Computer
- 80 GB HD, 2 GB RAM
- CD-ROM (CD-RW for archive purposes)
- Monitor
- Printer
- Win XP Service Pack 2
- 2 available USB ports



12779 W. Belleview Ave.  
Littleton, CO. 80127 USA  
T: 303.697.8888 F: 303.697.8580  
E: [info@scancad.com](mailto:info@scancad.com) [www.scancad.com](http://www.scancad.com)