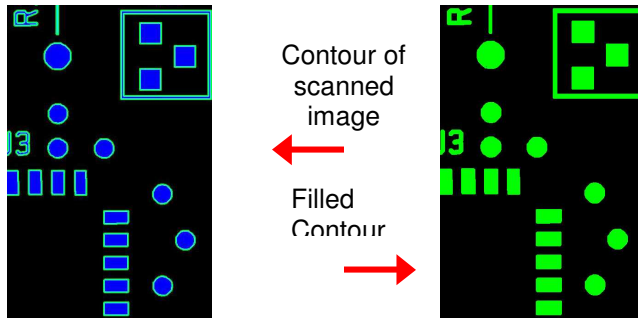


ScanFAB Lite & Xtra Lite™

"Linking existing designs to CAD & Production"



WHAT IS ScanFAB Lite?

ScanFAB Lite is a fully integrated, stand-alone workstation linking existing or old designs with today's automated production environment.

ScanFAB Lite uses Windows based software integrated with a high-resolution, calibrated flatbed scanner. Scanning can be performed in color or B/W mode. This combination allows fast vectorization of data for original board designs, regardless of input.

ScanFAB Xtra-Lite

A software only version is also available which imports un-calibrated standard TIFF or BMP images from any scanner platform and then converts the image to vector format using the same processes.

INPUT DATA VERSATILITY

ScanFAB Lite adds flexibility to the fabrication process. Utilizing its calibrated scanner, ScanFAB Lite inputs silver or diazo film, Mylar images, technical drawings, PCBs or your original hand-taped designs to produce 274X Gerber data.

AUTOMATIC FEATURES

Tired of using slow vectorization methods? ScanFAB Lite uses a one-button feature that quickly and automatically vectorizes the image. Data is converted to vector format by creating a contour and fill of image, and generating a Gerber 274X formatted output file. ScanFAB Lite is a one step, low-cost vectorization tool.

WHY USE ScanFAB Lite?

- **Necessity:** Supply production with 274X Gerber data.
- **Flexibility:** Use Silver film, Mylar, Diazo, Glass, PCB, paper as input.
- **Security:** Prevent film/drawing deterioration by storing images in electronic format.
- **Security:** Archive multiple copies of designs, both on and off-site.

SCANNING

- Silver Film, Mylar, Diazo, PCBs, paper
- 400, 1000, 2000, 3200 and 4000 DPI

AUTOMATIC FUNCTIONS

- Automatic contour and fill of image, creating a 274X formatted Gerber file

OUTPUT FILES

- Gerber files (274X)

UPGRADEABLE

ScanFAB Lite can easily be upgraded to have full reverse engineering (ScanFAB) capabilities.

SCANNER

- High-Resolution Flatbed Scanner, Size A3: (400/1000/2000/3200*/4000* dpi)
- Calibrated Accuracy: $\pm 0.0015"$ ($\pm 0.0381\text{mm}$)
- Scanning Bed Area: 11.7" x 16.5" (297mm x 420mm)
- Maximum Work Area: 32.0" x 32.0" (813mm x 813mm)

* Reduced scanning area for 3200 and 4000 dpi.

COMPUTER**

- Pentium (3GHz or higher) Personal Computer
 - 80 GB HD, 2 GB RAM
 - CD-ROM (CD-RW for archive purposes)
 - Monitor
 - Printer
 - Win XP Service Pack 2
 - 2 available USB ports
- **Recommended customer supplied minimum PC requirements.

ADDITIONAL SYSTEM COMPONENTS

- Precision Glass Calibration Grid
- Software Protection Key
- Scanning Accessory Package

The following are trademarks of the indicated companies: GERBER, The Gerber Scientific Instrument Company; HP, Hewlett-Packard; MS-DOS, Windows XP, Microsoft®. ScanFAB Lite™ and ScanFAB XtraLite™ is a trademark of ScanCAD International, Inc.

(All specifications and designs subject to change without notice.)



12779 W. Belleview Ave.
Littleton, CO. 80127 USA
T: 303.697.8888 F: 303.697.8580
E: info@scancad.com www.scancad.com