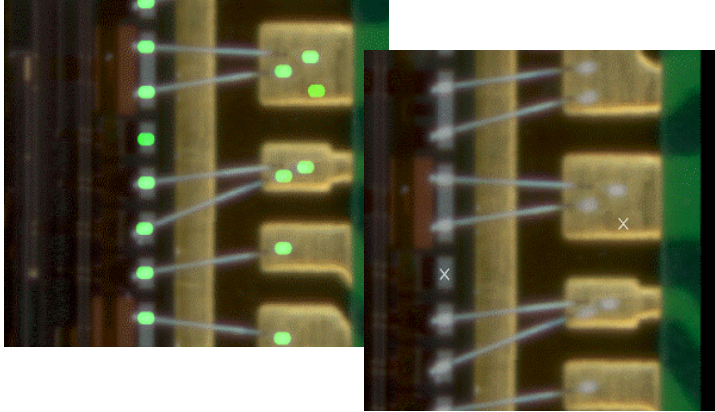


ScanINSPECT WBI™

"Wire Bond Inspection"



WHAT IS ScanINSPECT WBI?

ScanINSPECT WBI provides a simple and user-friendly alternative to inaccurate and time-consuming manual inspection methods or expensive, high-end AOI systems.

ScanINSPECT WBI uses a simple Windows user interface integrated with an automatic conveyor and image-processing unit. This combination allows 100% inspection of presence/absence of wire bonds.

HOW DOES ScanINSPECT WBI WORK?

ScanINSPECT WBI provides 100% 2D non-contact verification of absence / presence of Al or Au wire bonds before adding further value to the assembly.

Each part exits the wire bonder and enters ScanINSPECT WBI for 100% inspection. The part is then accepted and continues on with the process or rejected for disposition. No more surprises!

QUICK & SIMPLE PROGRAMMING

ScanINSPECT WBI is quickly programmed from a golden part in a few minutes.

INCREASE YIELD & IMPROVE OVERALL EQUIPMENT EFFICIENCY

ScanINSPECT's powerful inspection process increases product yield by ensuring accurate wire bond placement. Thus, assisting with high yields and minimal rework and/or scrap.

Missing wire bonds can result in lost production time and extensive rework. WBI eliminates operator fatigue and tedium from the inspection task, and automatically verifies 100% of the bonds.

Missing wire bonds are now automatically detected. Problems are logged and eliminated before more value is added to defective parts.

SIMPLICITY

ScanINSPECT set up is fast and easy. In production, each part is shuttled in the system, automatically aligned and checked for defects with a PASS or FAIL inspection in seconds.

Failures are detected, logged and printed for easy rework identification.

WHY USE ScanINSPECT WBI?

- Mandatory: 100% automatic inspection of wire bonds.
- Security: Confirm wire bond absence / presence.
- Necessity: Detect errors before adding further value to defective parts.
- Flexibility: Inspect a wide variety of part sizes and shapes.



CONVEYOR MODULE

System Specifications

- Maximum Board Size: 18" X 20" (457mm X 508mm)**
 - Minimum Board Size: 2" x 2" (50mm x 50mm)
 - Maximum Inspection Area: 16.5" X 20" (419mm X 508mm)
 - Resolution: 400/1000/2000/3200*/4800* dpi
 - SMEMA Interface
 - CE Certified
- *Reduced Scanning area for 3200 & 4800 dpi.
** XL size conveyor

Footprint of Inspection System

- Length: 41.7" (1060mm)
- Width: 42.9" (1089mm)
- Height: 57" (1450mm) excluding light tower
- Weight: 330lbs. (150kg)

COMPUTER

- Pentium (3GHz or higher) Personal Computer
- 80 GB HD, 2 GB RAM
- CD-ROM (CD-RW for archive purposes)
- Monitor (17" or larger)
- Printer
- Win XP Service Pack 2
- 2 available USB ports

(All specifications and designs subject to change without notice.)



12779 W. Belleview Ave.
Littleton, CO. 80127 USA

T: 303.697.8888 F: 303.697.8580

E: info@scancad.com www.scancad.com